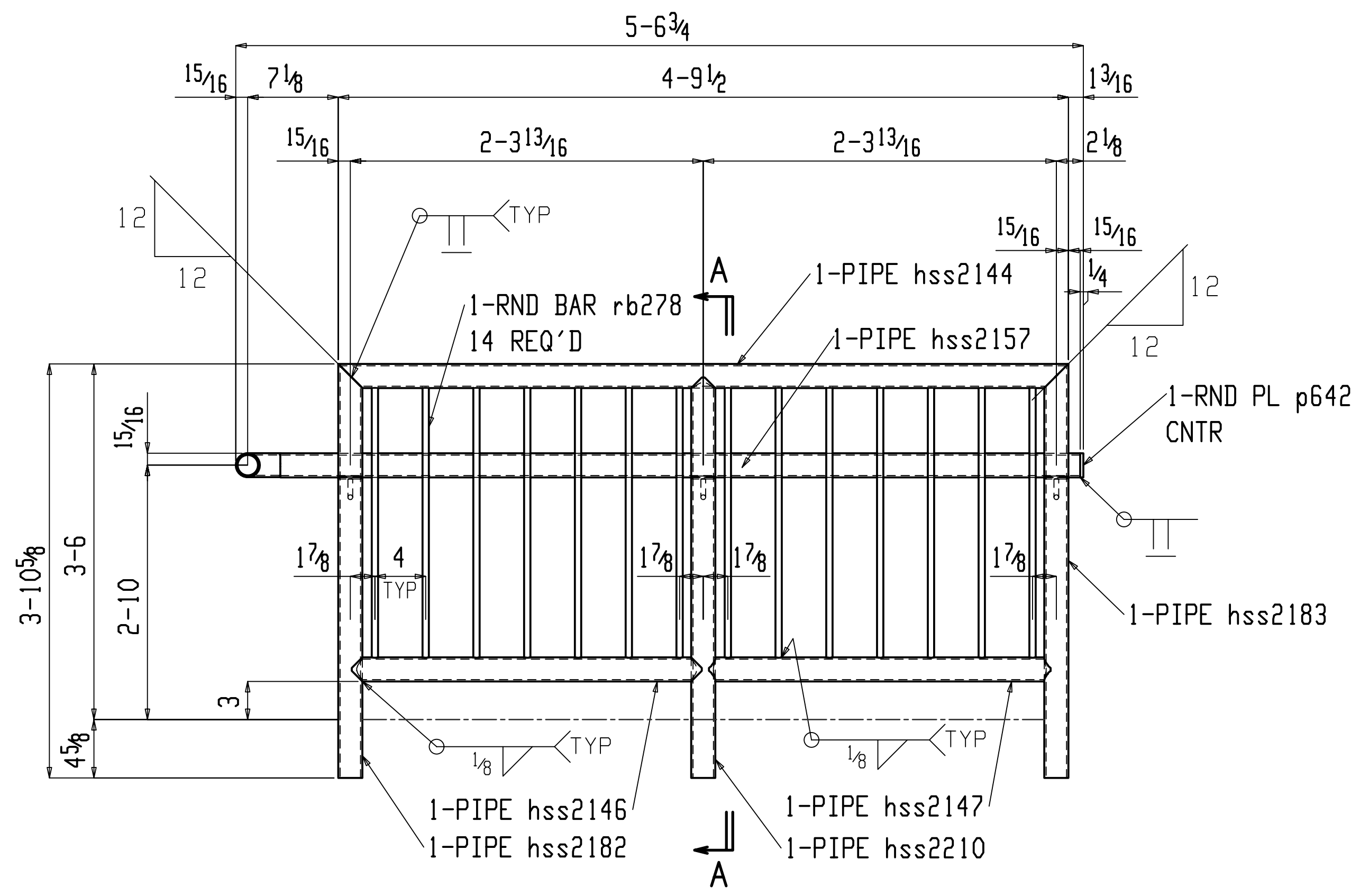
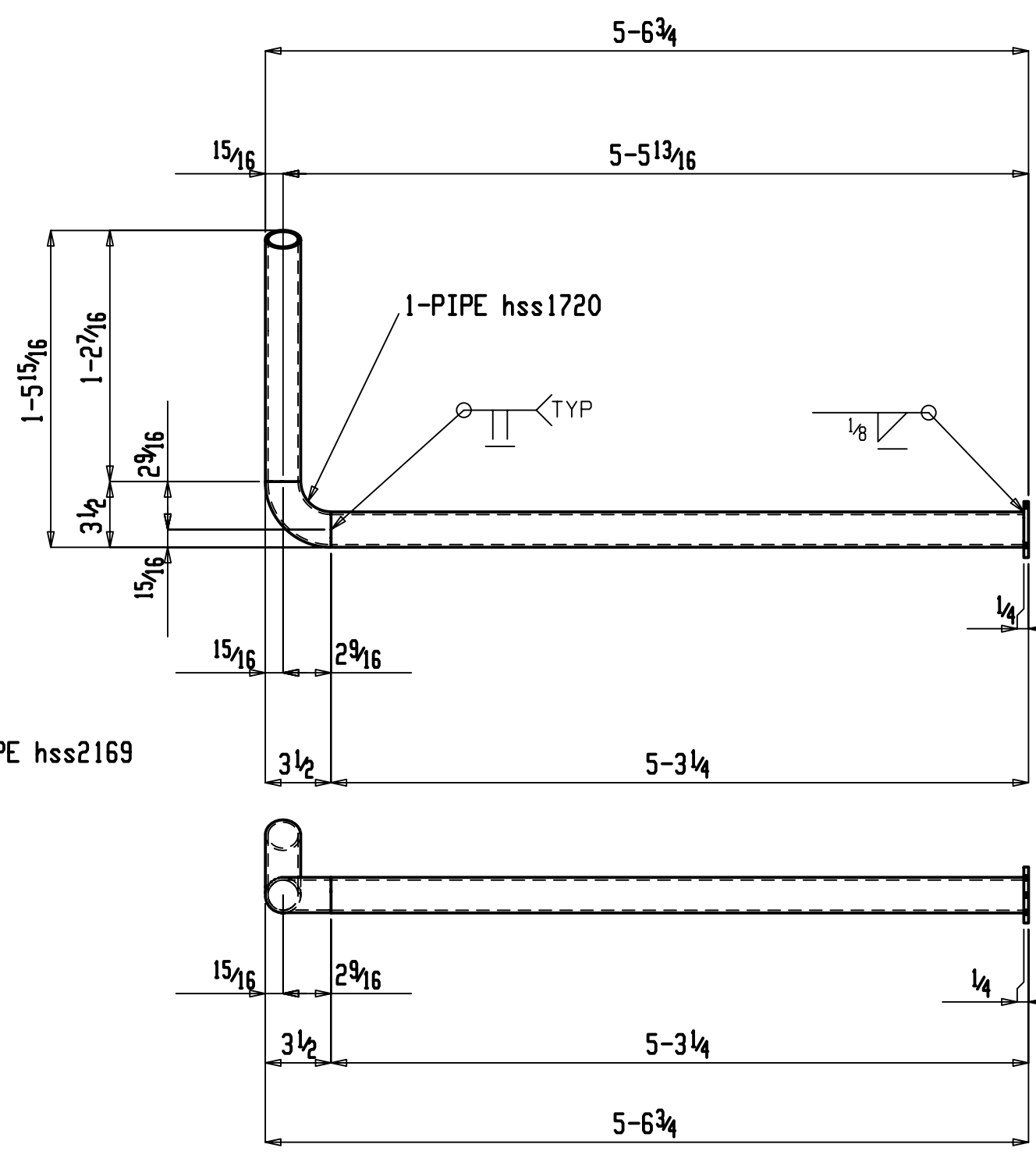
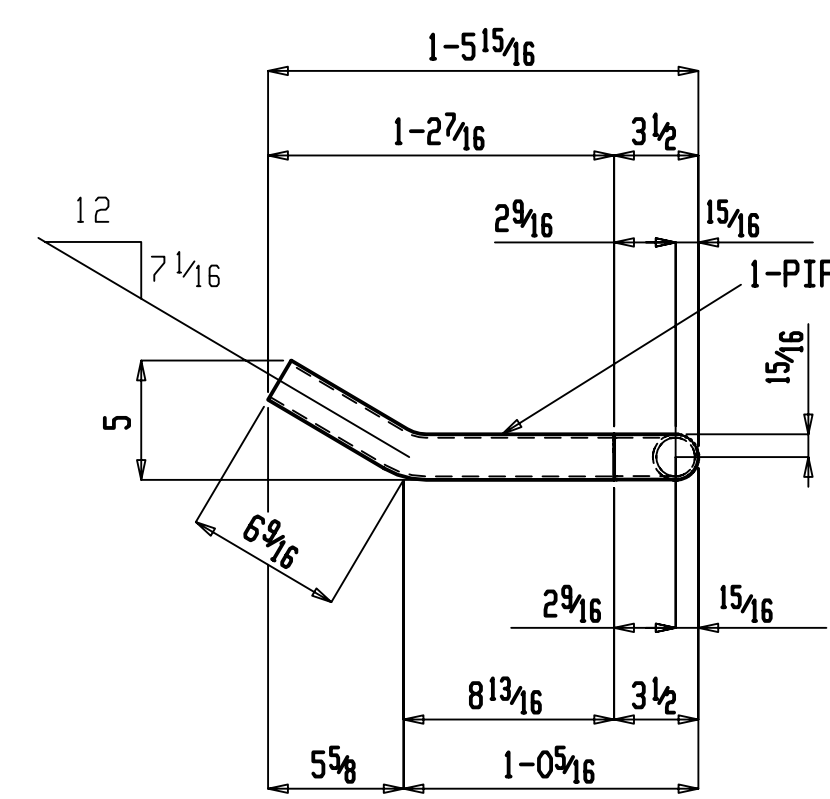


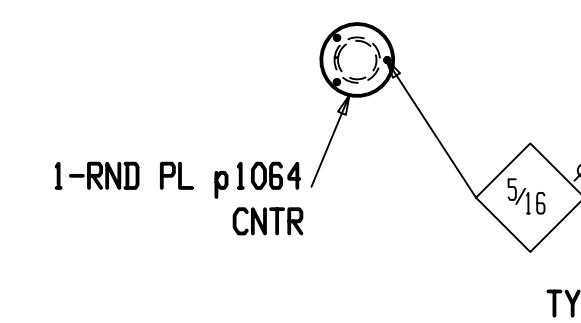
Section A-A
99HR1



ONE HANDRAIL 99HR1



ONE HANDRAIL 99HR2



BILL OF MATERIAL

LINE #	QTY	PC MARK	DESCRIPTION	LENGTH	REMARKS	WEIGHT TOTAL	ADVANCE MILL #
ONE 99HR1			HANDRAIL			100	
1	hss2144		PIPE 1 1/2 STD	4 3/2	A53	13	
1	hss2157		PIPE 1 1/2 STD	5 3	A53	14	
1	hss2183		PIPE 1 1/2 STD	3 10 3/8	A53	11	
1	hss2182		PIPE 1 1/2 STD	3 10 3/8	A53	11	
1	hss2210		PIPE 1 1/2 STD	3 9 3/8	A53	10	
1	hss2146		PIPE 1 1/2 STD	2 3 3/8	A53	6	
1	hss2147		PIPE 1 1/2 STD	2 2 15/16	A53	6	
1	hss1720		PIPE 1 1/2 STD	0 5 1/2	A53	1	
1	p642		PL 1/4 x 1 1/2		A36	0	
14	rb278		RB 1/2	2 11 3/16	A36	28	
3			SADDLE BRACKETS		WAGNER #S101		
ONE 99HR2			HANDRAIL			19	
1	hss2157		PIPE 1 1/2 STD	5 3	A53	14	
1	hss2169		PIPE 1 1/2 STD	1 3 3/8	A53	3	
1	hss1720		PIPE 1 1/2 STD	0 5 1/2	A53	1	
1	p1064		PL 1/4 x 3		A36	1	

-ALL MATERIAL TO BE A36 UNLESS NOTED
 -ALL TUBES TO BE A500-GRB (FY=46) UNLESS NOTED
 -ALL PIPES TO BE A53-GRB UNLESS NOTED
 -ALL HS SHOP BOLTS TO BE TORQUED UNLESS NOTED
 -ALL RUNNING DIMENSIONS FROM END OF MAIN MATERIAL
 -ALL SHOP WELDS TO BE E70XX-LH ELECTRODES
 -ALL COPES TO BE RADIUSED
 -ALL BEAM TO BE FABRICATED WITH RESIDUAL CAMBER UP
 -MEMBERS ARE TO BE ERCTED SO THAT MARKED END IS
 IN SAME LOCATION AS ON ERECTION DRAWING